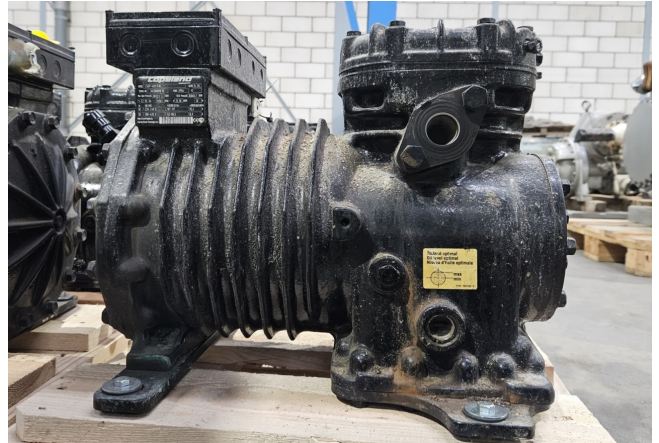


# Copeland LSGP-40X-EWL

## Specifications

Brand	Copeland
Type	LSGP-40X-EWL
Refrigerant	Freon
kW at -20°C/+40°C	7,4
kW at -30°C/+40°C	4,1
kW at -40°C/+40°C	1,7
kW at -45°C/+40°C	0,9
Sight Glass	✓
m3 / h	22,5
Remarks	Y.o.b. 2014
Weight in kg.	77 kg
Sizes	480x340x360 mm (LxWxH)
Stock	1



## Description

### Used Copeland LSGP-40X-EWL

Used Copeland LSGP-40X-EWL reciprocating compressor on Freon with a sight glass. The compressor has a displacement of 22,5 m<sup>3</sup>/h at 1450 RPM.

\*Why choose for HOSBV? Were not only the largest used refrigeration specialist in Europe, but also, we deliver all equipment including an extensive test, warranty and industrial cleaning.

\*Optional we can also perform a new paint job and arrange the logistics.

